

StatCalc Overview

StatCalc starts by displaying the Statistical Tools module. There are also tabs for the Decision Tools module and the Output Viewer. Use the Statistical Tools module to select and run statistical analyses. The output from all procedures, including the Decision Tools module, is automatically appended to the Output Viewer log. Data entry differs depending on the statistical procedure selected. Some procedures display a spreadsheet while others provide data entry boxes. Procedures that display a spreadsheet also allow copying, pasting, and saving data.

Deselect to exclude a row from analysis.

Click to load example data.

Click to run procedure.

StatCalc

New Open Save Print Copy Paste Glossary Help Example Data Calculate

Statistical Tools Decision Tools Output Viewer

Descriptive Statistics

Procedures	Y/N	Obs	Income
Frequencies	<input checked="" type="checkbox"/>	1	39000
Descriptives	<input checked="" type="checkbox"/>	2	59000
Weighted Mean	<input checked="" type="checkbox"/>	3	49000
Z-Score	<input checked="" type="checkbox"/>	4	52000
CI-Means	<input checked="" type="checkbox"/>	5	59000
CI-Proportions	<input checked="" type="checkbox"/>	6	61000
Diagnostic Accuracy	<input checked="" type="checkbox"/>	7	63000
Goodness of Fit	<input checked="" type="checkbox"/>	8	
Chi-Square	<input checked="" type="checkbox"/>	9	
Z-Test (One Sample)	<input checked="" type="checkbox"/>	10	
Z-Test (Two Sample)	<input checked="" type="checkbox"/>	11	
T-Test (One Sample)	<input checked="" type="checkbox"/>	12	
T-Test (Two Sample)	<input checked="" type="checkbox"/>	13	
	<input checked="" type="checkbox"/>	14	
	<input checked="" type="checkbox"/>	15	
	<input checked="" type="checkbox"/>	16	

Descriptive Results

Count	7
Sum	382000.0000
Mean	54571.4286
Median	52000.0000
Minimum	0.0000
Maximum	61000.0000
Range	61000.0000
Population Variance	61673469.3878
Sample Variance	71952380.9524
Population Std Dev	7853.2458
Sample Std Dev	8482.4749
Standard Error	3206.0742

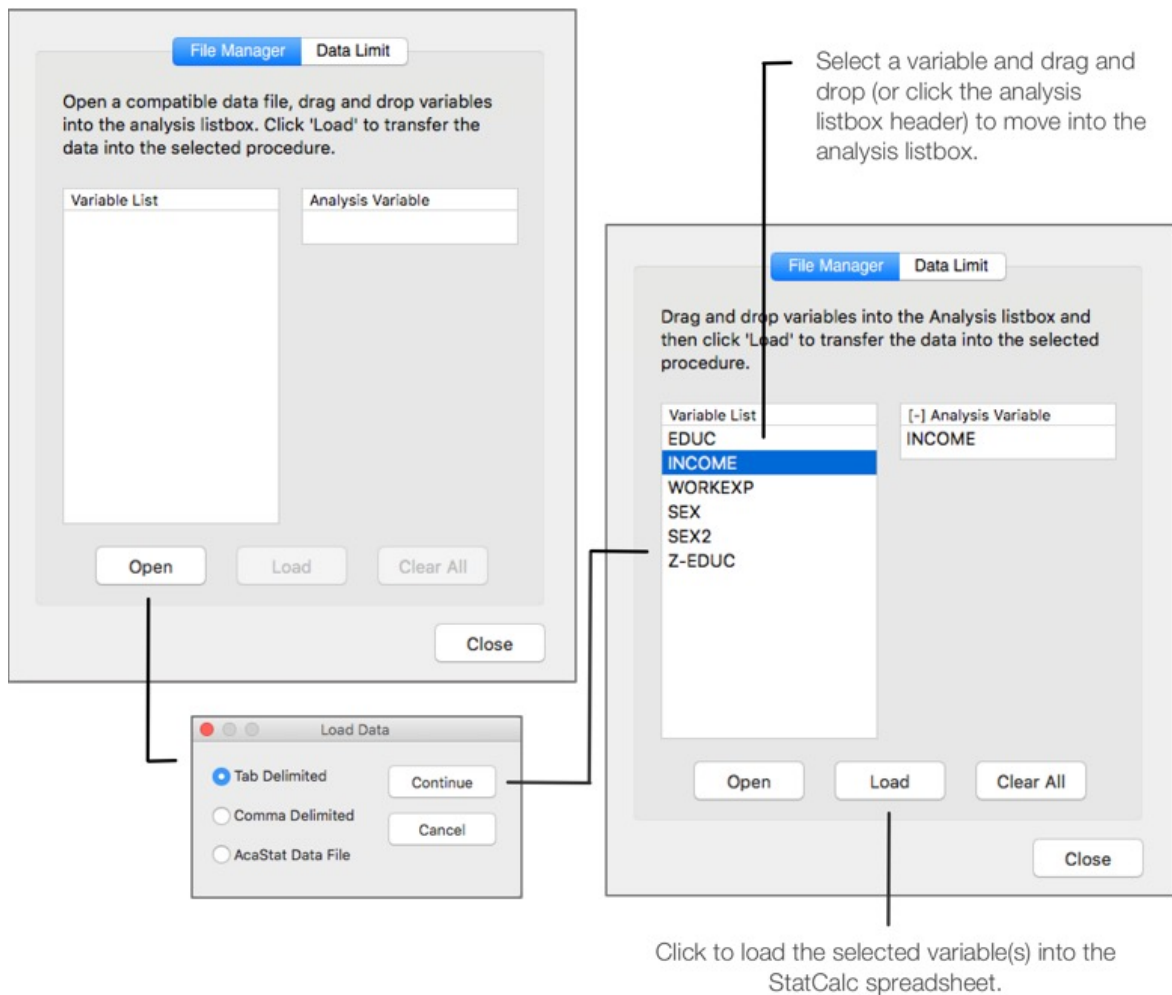
Ready- Results are available in the Output Viewer.

Enter or edit data.

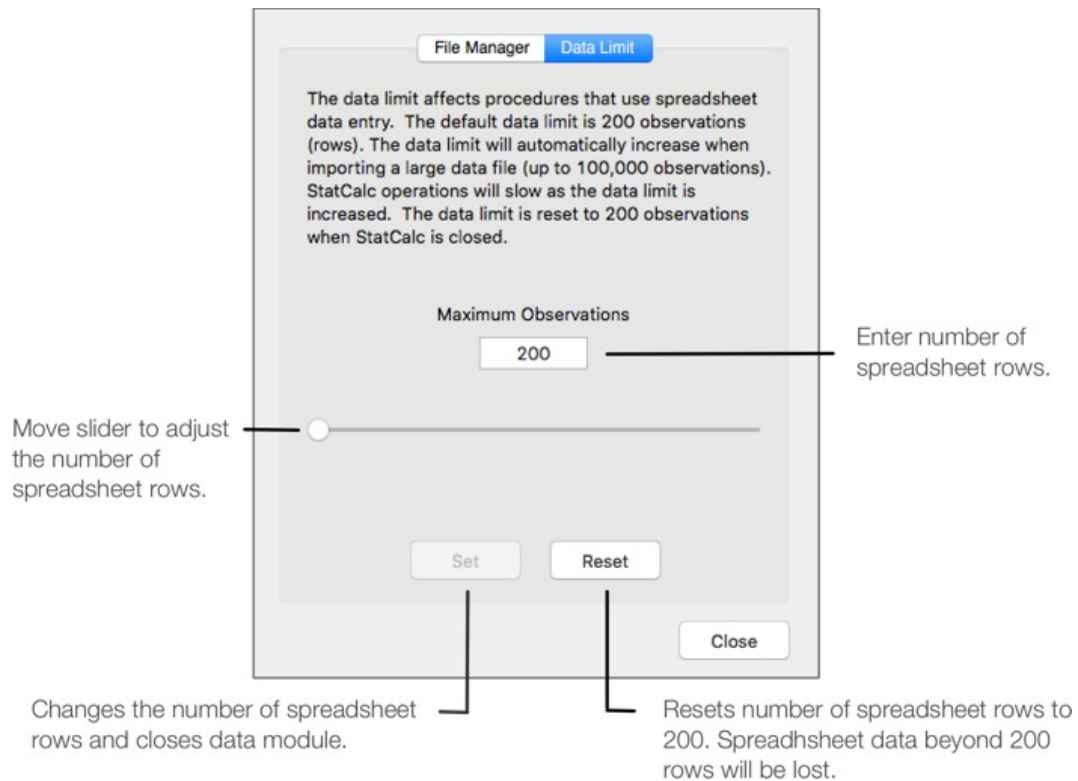
Click to open Data Manager module.

Data Manager Module

The Data Module is displayed by clicking the cube at the bottom right of the application or when a file is dragged into the spreadsheet. The Data Manager module contains two tabs: File Manager and Data Limit. File Manager allows the selection and opening of compatible data files (tab and comma delimited text files and AcaStat system files). Variable names from the first row of file will be displayed. Drag and drop these variables into the available analysis listboxes. The listbox format will change depending on the statistical procedure selected. Click "Load" to populate the spreadsheet. Data Manager will automatically close to display the statistical procedure. The imported data will be available for all compatible statistical procedures until the file is cleared from memory.



The Data Limit tab affects procedures that allow spreadsheet-like data entry. When importing data files larger than the default 200 observations, StatCalc will enlarge the spreadsheet to match the data. StatCalc operations will slow as the data limit is increased. When StatCalc is closed, it will reset to the default . For data entry larger than 200 observations, use the Data Limit module to change the spreadsheet size.



Output Viewer

The Output Viewer displays the results of the analysis in a text window for editing and printing. Each time a statistical procedure is run, the results are automatically sent to the output log. Notes can be added to the output before printing or saving. The Output Viewer can open output saved by StatCalc, Clarity or AcaStat.

The Output Viewer uses a fixed font that ensures proper alignment of the tables (right click the output to view fixed font options) . When copying output to a word processor, the default font may not be fixed. This will result in tables that are out of alignment. To correct this, highlight the output in the word processor and change to a fixed font supported by your operating system. Common fixed fonts are Courier, Consolas, Menlo, and Monaco. The font size may also need to be reduced to ensure the output fits widthwise on one page.

Select a log entry to view output.

Saved output can be opened in StatCalc or a word processor.

The screenshot shows the StatCalc application window with the Output Viewer tab active. The window title is 'StatCalc'. The menu bar includes 'New', 'Open', 'Save', 'Print', 'Copy', 'Paste', 'Glossary', 'Help', 'Example Data', and 'Calculate'. The 'Output Log' sidebar on the left lists 'Frequencies', 'Descriptives', 'Mean CI', 'Chi-Square', and 'Correlation'. The main area displays the following statistical output:

Frequencies
Variable: JobCat

Value	Count	Percent	Cumulative
Clerk	8	22.86	22.86
Manager	4	11.43	34.29
Mechanic	3	8.57	42.86
Technician	20	57.14	100.00

Total	35		
Value Count	4		

Goodness-of-Fit

	Value	DF	p <
One-Sample Chi-square	20.886	3	0.0001

Note: Frequency Expected = 8.75

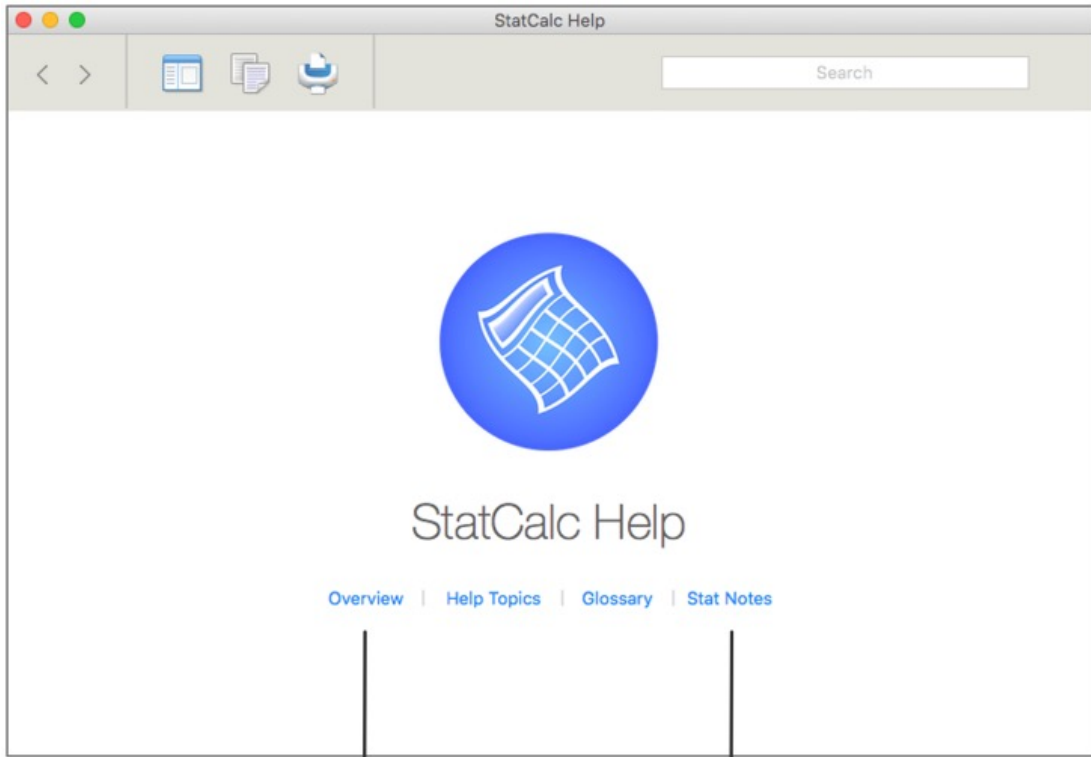
Pareto Sort

	Count		Cumulative
Technician	20))))))))))))))))))))))))))))))))))))))	57.14
Clerk	8))))))))))	80.00
Manager	4))))	91.43
Mechanic	3)))	100.00

Right click to change font and view other menu options.

Help Module

The Help Module displays links to an overview of application operations, help topics, a statistics glossary, and annotated statistical output.



Requires Internet Access.